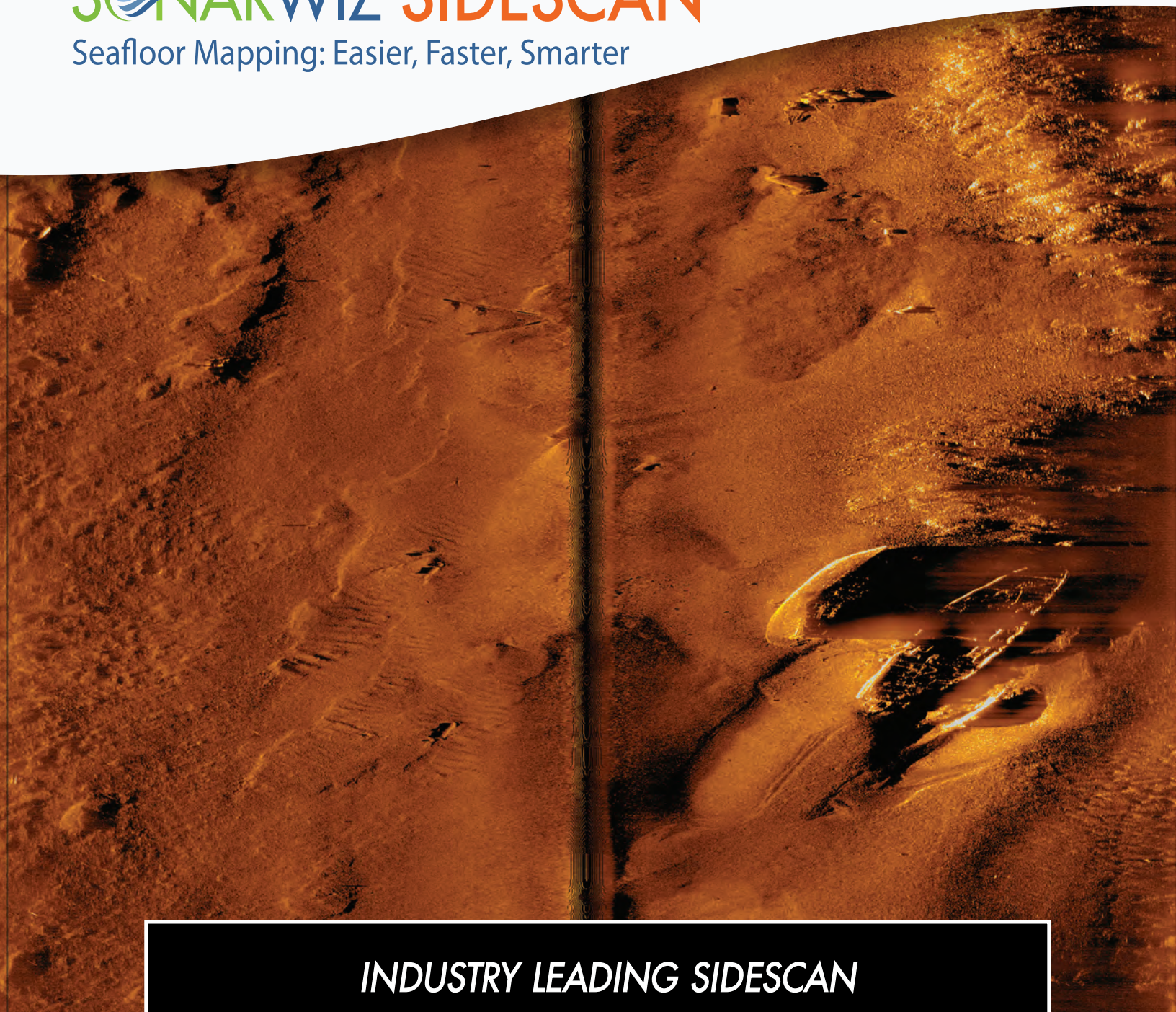





# SONARWIZ SIDESCAN

Seafloor Mapping: Easier, Faster, Smarter

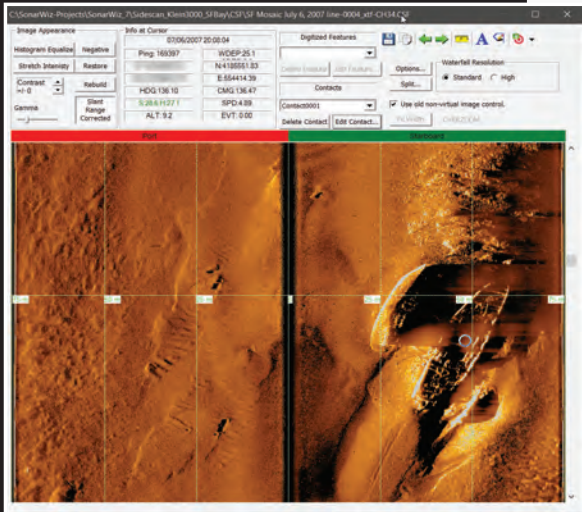


## *INDUSTRY LEADING SIDESCAN ACQUISITION AND SURVEY MANAGEMENT*

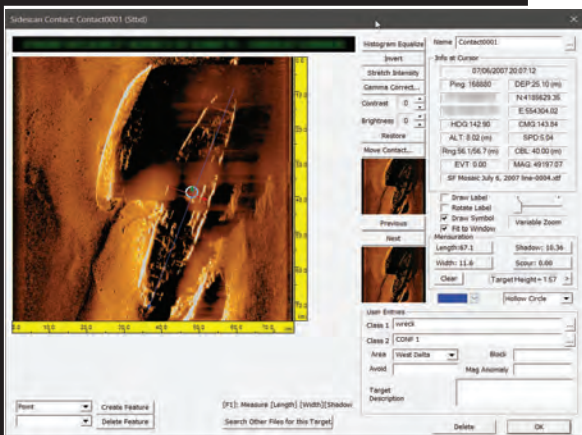
-  Designed from the ground up to support towed surveying
-  State of the art image processing algorithms
-  Powerful contact management and reporting system



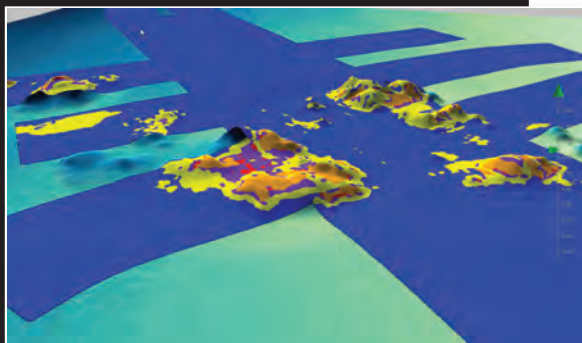
# SONARWIZ SIDESCAN



Powerful sidescan image processing features



Contact management designed to support commercial surveyors



Analyze image mosaics with the Seabed Characterization Tool

## CONTACT MANAGEMENT

Extensive contact management & reporting capabilities designed to support large sidescan surveys. Pick contacts in the waterfall or plan view windows and markers will appear throughout the program. Search for contacts in other track lines or rationalize multiple contacts into a single improved target. Build database queries on 30+ automatic and user-defined data fields. Update contact data when survey navigation is modified in post-processing. Export contacts as georeferenced images, MS Office reports, or GIS layers.

## DATA ACQUISITION

Lay out your lines and estimate survey timing with SonarWiz survey planning tools and send the plan to the remote helm display. Acquire sonar, navigation, fathometer data, payout meter and magnetometer data simultaneously. Configure the real time display options to display just the data you want, including sidescan and subbottom waterfalls, contact target strips, and fully processed, real-time mosaics

## POST PROCESSING

Powerful tools for correcting the navigation of towed sensors include manual editing & filtering, post-process navigation injection, & map corrections to multibeam ground truth. Advanced gain & signal processing filters to enhance target detection or prepare a sidescan survey for habitat classification. The Seabed Characterization Tool can segment acoustic imagery into homogeneous regions for sediment classification. Export corrected data to XTF or one of many supported GeoReferenced Image, GIS and CAD formats

## LICENSING

SonarWiz is modular and each component can be purchased separately, as an add-on, or as part of a Field or Office bundle. We offer dongle and dongle-free licensing (DFL) options. DFL licenses eliminate the risk of lost or stolen dongles and can be transferred between any two internet-connected PCs in seconds. Network and Academic options are also available.

## SUPPORTED INTERFACES

Atlas NA-Marine Sonic Arc Explorer, HDS, SeaSca; Analog 16-bit Sidescans (with analog box); C-Max CM2; EdgeTech 4125/4200, 4600/6205; Falmouth Scientific HMS-624, Swordfish; GeoAcoustics PulsAR, GSF, GeoPulse Compact; Imagenex SportScan, Yellowfin; Jetasonic; Klein 3000, 3900, 4900, 5000, 5900, DeepSled, MA-X 600; PingDSP 3DSS; R2Sonic 202X series; SyQuest Aquascan; Teledyne-Odom 1624; Trittech Starfish, Seaking

## FILE FORMATS

81S, 83P, 872, ALL, CM2, COD, DAT, GCF, H5, HSX, JSF, KMALL, LOGDOC, MST, RAW, RDF, RFF, QPD+DB, SDF, SDS, SES3, SL2, SL3, SMB, SXR, SWF8, TIL, XSE, XTF

## CUSTOMER FRIENDLY SUPPORT YOU CAN COUNT ON

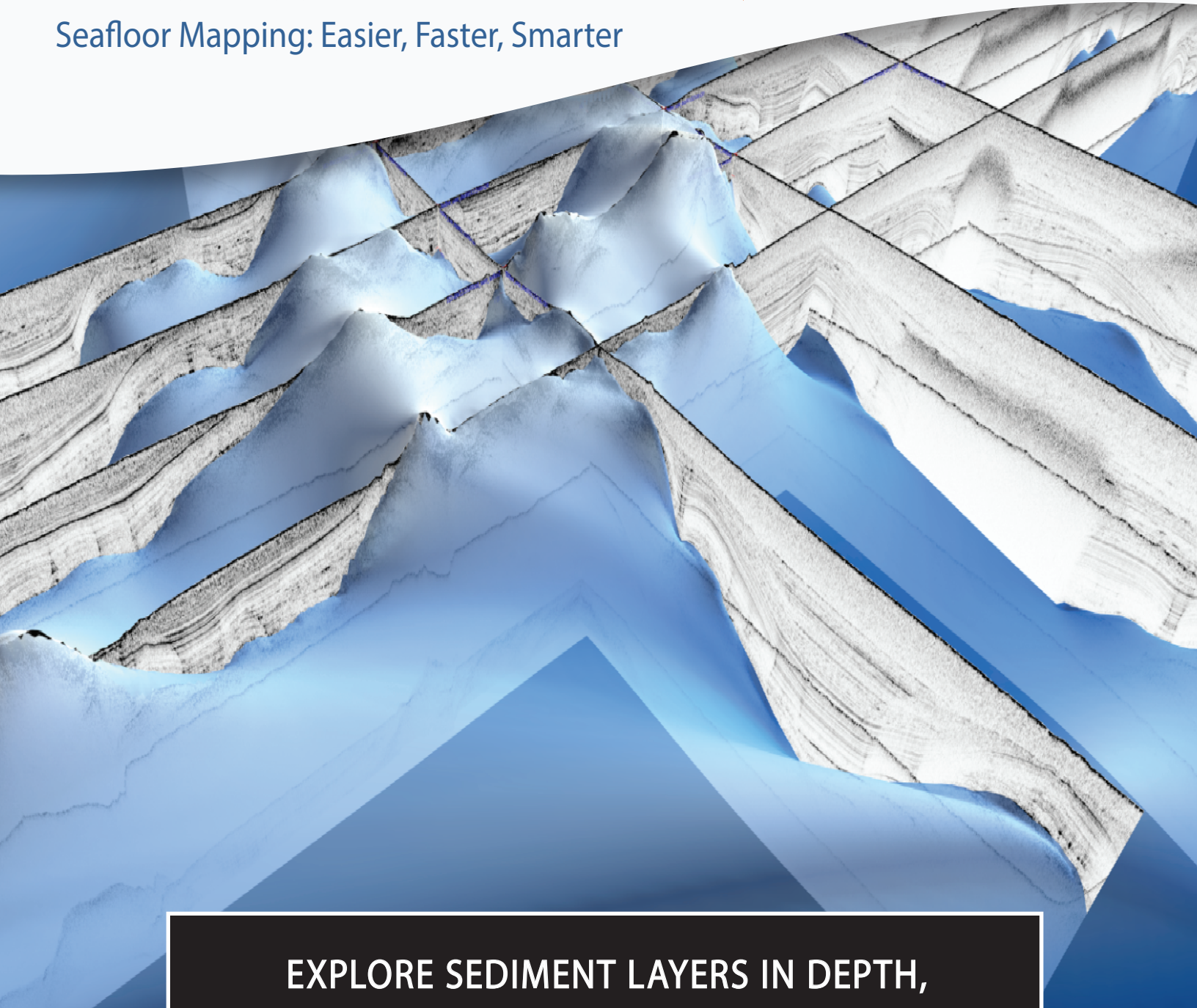
- CUSTOM ONSITE TRAINING • WEBINARS • WORKSHOPS • TUTORIALS
- BI-WEEKLY PRODUCT UPDATES • 24/7 DOWNLOADS • FREE TRIALS

**CHESAPEAKE  
TECHNOLOGY**

www.chesapeaketech.com

# SONARWIZ SUBBOTTOM

Seafloor Mapping: Easier, Faster, Smarter

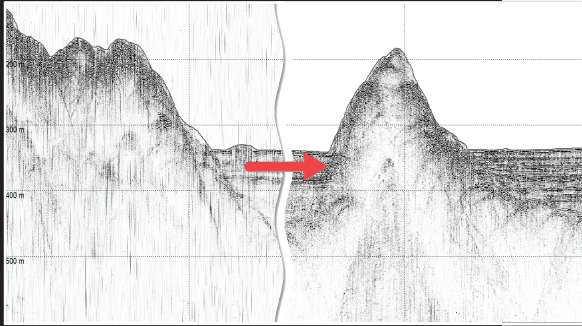


**EXPLORE SEDIMENT LAYERS IN DEPTH,  
WITH REAL-TIME DATA ACQUISITION**

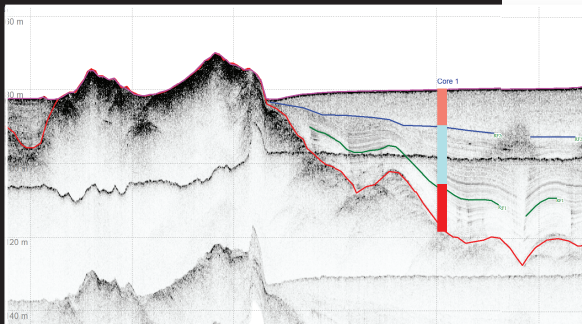
- Signal processing features designed specifically for marine survey data
- Apply laybacks, tides, heave filters and bathymetric alignment
- Easily visualize your data in two or three-dimensions
- Support for navigation, fathometer and magnetometer data



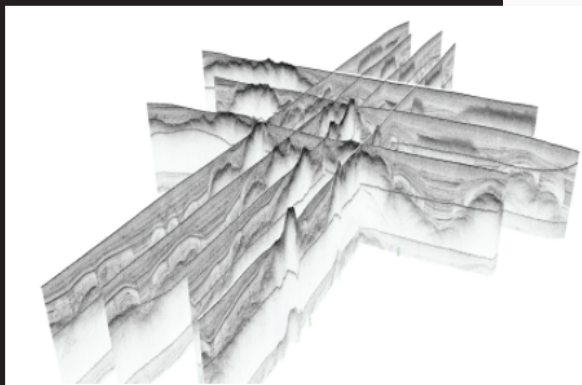
# SONARWIZ SUB-BOTTOM



Powerful gain and filtering options increase the information content of the data.



Bottom-track, filter and trace acoustic reflectors in the SonarWiz profile view.



Easily visualize and share SBP data in 3D.

## DATA PROCESSING

Comprehensive signal processing and gain control options for sub-bottom profile data, including features designed specifically for marine surveys such as edit or inject navigation, make layback adjustments, apply tide corrections and remove heave from data. Easily apply gains and filters, correct vertical offsets and apply datum adjustments to the entire survey, then export the corrected profiles to new SEG Y files or other formats for processing in 3rd party seismic or GIS software.

## INTERPRETATION & VISUALIZATION

Quickly digitize acoustic horizons using smart reflector tracking. Distinguish horizons from multiples with the new multiple identification tool. Compare intersecting profiles directly in the digitizer or in quickly built 3D cross-profiles. Annotate your profiles with well logs to aid interpretation and perform isopach and volumetric computations on the layers you've identified. Easily create 3D fence plots. Generate customized reports of your work and export your corrected data to SEG Y or one of the many supported GIS or CAD formats.

## LICENSING

SonarWiz is modular and each component can be purchased separately, as an add-on, or as part of a Field or Office bundle. We offer dongle and dongle-free licensing (DFL) options. DFL licenses eliminate the risk of lost or stolen dongles and can be transferred between any two internet-connected PCs in seconds. Network and Academic options are also available.

## SUPPORTED INTERFACES

Analog 16-bit or 24-bit systems (with Analog Box); EdgeTech 3100/3200; Falmouth Scientific ChirpCeiver; Geoacoustics GeoPulse; Innomar SES-2000; Klein 3000; Knudson SB; SyQwest Stratabox, Hydrobox, Bathy2010; Teledyne-Odom 1625, Chip III, Echotrack CVM, Echotrack E20.

## FILE FORMATS

ACF, ASD, BSS, COD, DAT, GSF, KEB, JSF, ODC, RAD, RAW, S7K, SDF, SEG, SES, SES3, SGY, SL2, SL3, TRA, V4log, XTF.

Recommended PC 64bit, Win 10, DirectX11+, 8GB, SSD, USB port.

## CUSTOMER FRIENDLY SUPPORT YOU CAN COUNT ON

- CUSTOM ONSITE TRAINING ● WEBINARS ● WORKSHOPS ● TUTORIALS
- BI-WEEKLY PRODUCT UPDATES ● 24/7 DOWNLOADS ● FREE TRIALS

**CHESAPEAKE**  
**TECHNOLOGY**  
www.chesapeaketech.com



# SONARWIZ MAGNETOMETRY

Seafloor Mapping: Easier, Faster, Smarter

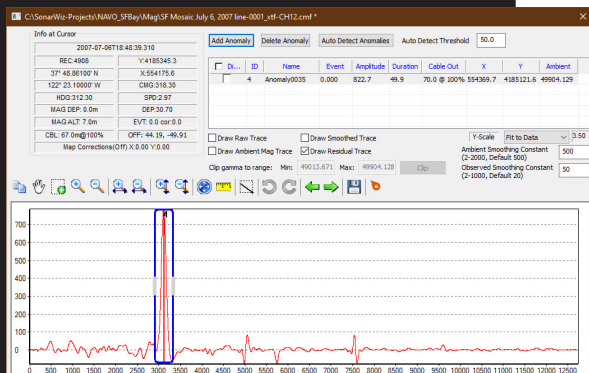


## ***REAL-TIME DATA ACQUISITION AND POST-PROCESSING FOR MAGNETOMETER DATA***

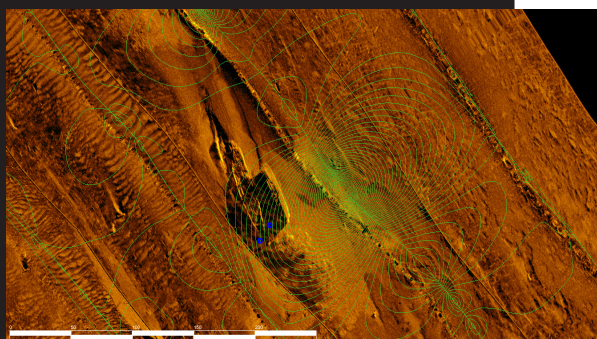
- Provides full range of navigation filtering and smoothing of magnetometry signals
- Automatically or manually mark magnetic anomalies
- Visualize your data in two or three-dimensions



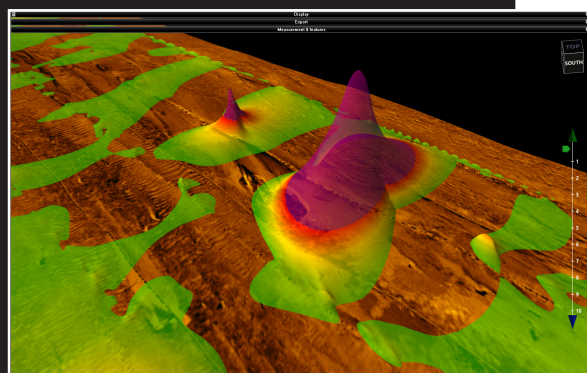
# SONARWIZ MAGNETOMETRY



Digitize magnetic anomalies and identify targets.



Grid and contour the magnetic field and display it on backscatter imagery.



Create 3D surfaces from your magnetic data to make powerful visualizations.

## DATA PROCESSING

SonarWiz Magnetometry provides the full range of navigation, filtering, smoothing, and repair that SonarWiz offers for sidescan and subbottom post-processing. Anomaly positions can also be recentered on sidescan targets using the interactive map correction features in SonarWiz. Magnetometry (Mag) real time acquisition (RT) included with all SSS/SBP RT licenses. Mag sold as add-on module or in the full Office Post-Processing Suite.

## DIGITIZING

SonarWiz can detect magnetic anomalies automatically or they can be placed manually in the profile view. Once identified, anomalies can be shown on the plan view map or nearby sidescan waterfalls to help aid in target identification. SonarWiz can also be configured to automatically assign attribute information to anomalies based on the location of known pipeline or other structures.

## VISUALIZATION AND REPORTING

SonarWiz offers several useful magnetometer visualization and export options. In addition to individual anomaly markers, the entire magnetic trace can be displayed on the map as a color-coded stick plot. It is also easy to interpolate the magnetic data into a 3D surface for display with other SonarWiz sidescan and sub-bottom data.

## LICENSING

SonarWiz is modular and each component can be purchased separately, as an add-on, or as part of a Field or Office bundle. We offer dongle and dongle-free licensing (DFL) options. DFL licenses eliminate the risk of lost or stolen dongles and can be transferred between any two internet-connected PCs in seconds. Network and Academic options are also available.

## SUPPORTED INTERFACES

AquaScan AX2000, GEM 19M, 19T, Geometrics 881 & 882, Marine Magnetics Standard and with Depth, plus many more. Refer to the Magnetometry Reference PDF or contact CTI Technical Support for details.

## FILE FORMATS

SonarWiz uses a template system for parsing magnetic formats. New templates added to the program as needed. Templates for the following are available out of the box: AquaScan, EdgeTech (JSF), GEM Systems (MagLog), Geometrics, Generic (CSV, TXT, XYZ), Hypack (RAW), Marine Magnetics, SonarWiz

Recommended PC 64bit, Win 10, DirectX11+, 8GB, SSD, USB port.

CUSTOMER FRIENDLY SUPPORT YOU CAN COUNT ON

- CUSTOM ONSITE TRAINING • WEBINARS • WORKSHOPS • TUTORIALS
- BI-WEEKLY PRODUCT UPDATES • 24/7 DOWNLOADS • FREE TRIALS

**CHESAPEAKE  
TECHNOLOGY**  
www.chesapeakeotech.com